

XT Automated Dispensing Cabinets and Drawers

No other medication dispensing system offers more cabinet choices to meet the needs of acute and post-acute care sites. The scalable Omnicell® XT Automated Dispensing System can easily be expanded with additional cabinets, and drawers can be added or changed on-site as clinical needs evolve. Medications and supplies can be combined in a single cabinet, promoting convenience and saving space.



XT Automated Dispensing Cabinets



One-Cell Cabinet
Height: 77.5"
Width: 26.5"
Depth: 27.0"



Two-Cell Cabinet
Height: 77.5"
Width: 51.5"
Depth: 27.0"



Three-Cell Cabinet
Height: 77.5"
Width: 76.5"
Depth: 27.0"



Half-Height Cabinet
Height: 53.3"
Width: 26.5"
Depth: 27.0"



Quarter-Height Cabinet
Height: 25.4"
Width: 26.5"
Depth: 27.0"

Omnicell XT Cabinet Drawers

Metal Locking Lid Drawers

Durable metal locking lids keep medications secure. All drawers include Guiding Lights.



6-Bin Double-Deep Wide

Largest locked bin in the industry—fits IV bags and other bulky items.

Bins:
Double Deep Wide
Height: 4.0"
Width: 10.1"
Length: 6.3"



10-Bin

Larger bin fits up to three 60 mL PCA units.

Bins:
5 Extended-Wide 5 Long
Height: 1.7" Height: 1.7"
Width: 6.6" Width: 13.8"
Length: 3.4" Length: 3.4"



15-Bin Double-Deep Narrow

Accommodates medium-sized bulkier items such as 100 mL premixed bags.

Bins:
Double Deep Narrow
Height: 3.8"
Width: 3.5"
Length: 6.6"



18-Bin

Securely stores a variety of items, including prefilled syringes.

Bins:
Extended
Height: 1.7"
Width: 6.6"
Length: 2.6"



27-Bin

Larger bin accommodates prefilled syringes and other larger items.

Bins:
18 Standard 9 Extended
Height: 1.7" Height: 1.7"
Width: 2.9" Width: 6.6"
Length: 2.6" Length: 2.6"



36-Bin

Securely stores oral solids, vials, and small par level items.

Bins:
Standard
Height: 1.7"
Width: 2.9"
Length: 2.6"

Open Configurable Drawers

Greater configurability and brighter Guiding Lights than previous generation.



24-Bin Double-Deep

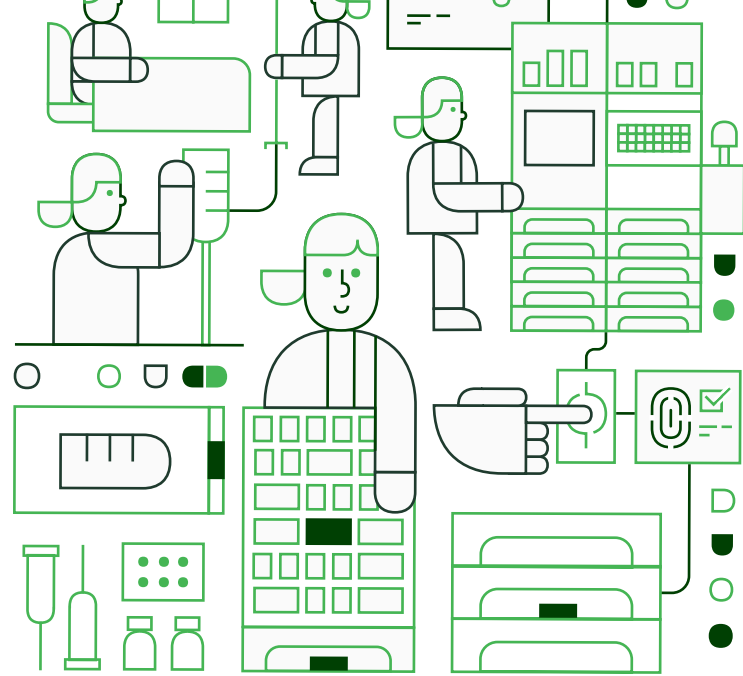
Double-deep drawer can be configured to include up to 24 bins.



48-Bin

Drawer can be configured to include up to 48 bins.

XT Auxiliary Cabinets



One-Cell Auxiliary Cabinet

Height: 77.5"
Width: 26.5"
Depth: 27.0"



Two-Cell Auxiliary Cabinet

Height: 77.5"
Width: 51.5"
Depth: 27.0"



Three-Cell Auxiliary Cabinet

Height: 77.5"
Width: 76.5"
Depth: 27.0"

Are you ready to make medication management easier?
Learn more about the XT series at [omnicell.com](https://www.omnicell.com).